

# HIGH PERFORMANCE VALVE



## SINGLE, TWO, THREE PIECE AND FORGED BALL VALVES

### Standards :

- Design and manufacturing Standard as per BS EN ISO 17292.
- Face to Face & end to End Dimensions Standard as per ASME B16.10
- Flange Dimensions Standards as per ISO 5208 {Replace of BS 6755(Part-1)}
- Fire Safe Design as per Api 607

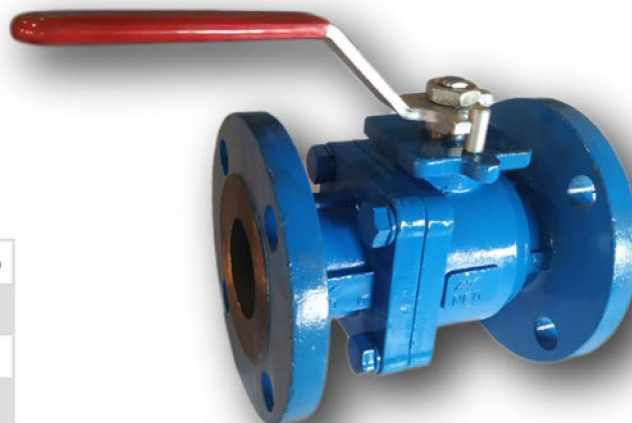
### Features :

- Design: Single Piece, Two Piece, Three Piece, Trunnion Mounted, Jacketed.
- Pressure Rating Class: 150#, 300#, 600#, 800#, 900#, 1500#.
- Operation: Manual Lever, Manual Gear Box, Electrical & Pneumatic actuator.
- Ends: Flanged, Screwed, Socket Weld, Butt Weld, Flanged Butt Weld.
- Size Range: 15mm to 200 mm

#150

#300

### Two Piece Full Port Ball Valve



#### TESTING PRESSURE( Kg/cm2)

		CLASS 150	CLASS 300
HYDRO - STATIC	SHELL	32	78
	SEAT	23	57
AIR	SEAT	7	

#### ASME 150 Class

#### Full Port

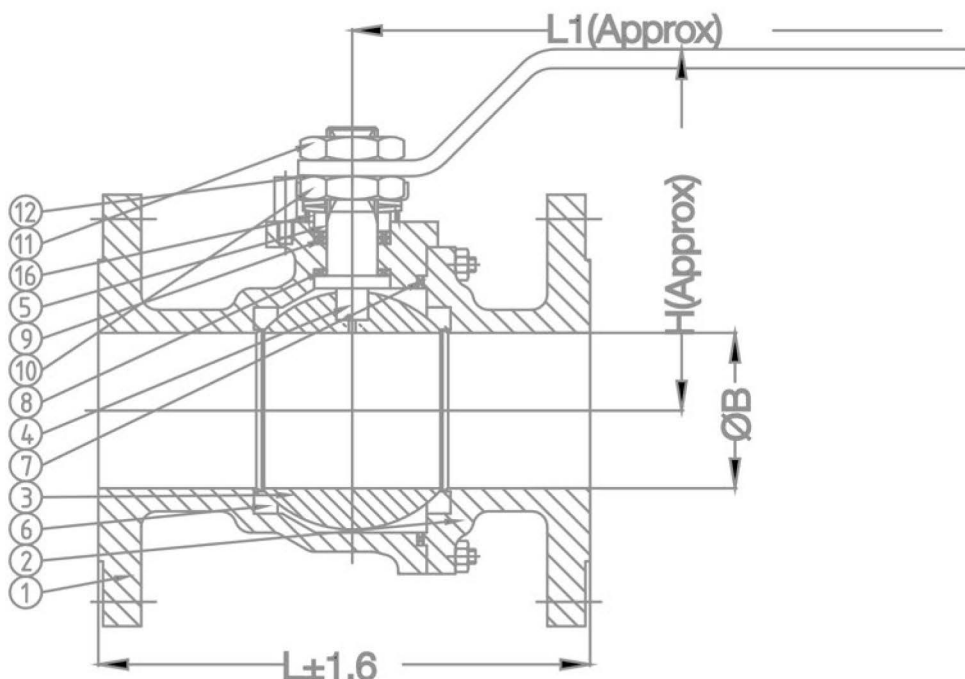
Size DN	15	20	25	40	50	65	80	100	150	200
L-RF	108	118	127	165	178	190	203	229	267	292
ØB	12.5	17	24	37	49	64	75	98	148	198
H(Approx.)	65	70	80	95	110	135	145	170	235	275
L1	150	155	160	180	200	225	325	350	500	600
WT.(Approx.)Kg	3	5	6	9	13	22	27	44	82	156

#### ASME 300 Class

#### Full Port

Size DN	15	20	25	40	50	65	80	100	150	200
L-RF	140	152	165	190	216	241	282	305	403	502
ØB	12.5	17	24	37	49	64	75	98	148	198
H(Approx.)	70	85	90	105	120	145	160	195	250	290
L1	156	160	180	200	225	325	350	500	600	700
WT.(Approx.)Kg	3	5	7	13	15	28	32	56	106	172





### Features

1. 'NEO' VALVES CAST STEEL BALL VALVES HAVE BEEN DESIGNED TO MEET THE REQUIREMENTS OF BS5351 / EN ISO 17292-2004
2. BLOWOUT PROOF STEM DESIGN.
3. FIRE SAFE DESIGN AS PER API 607 / BS6755 PART-1
4. ANTISTATIC DEVICES ENSURE ELECTRICAL CONTINUITY BETWEEN BALL, STEM & BODY.
5. FLEXIBLE LIP SEATS FOR CAVITY RELIEF.
6. ISO MOUNTING PAD FOR EASY AUTOMATION.

### Technical Specifications

**MANUFACTURING STD.** : BS 5351 / EN ISO 17292-2004  
**FACE TO FACE, END TO END** : ASME B16.10  
**END CONNECTION** : FLANGED ENDS TO ASME B16.5  
**INSPECTION AND TESTING STD.** : BS 6755 (PART-I) / EN ISO 12266

### Options

1. PNEUMATIC ACTUATOR / MANUAL GEAR OPERATOR AVAILABLE.
2. LOCKING ARRANGEMENT.
2. VALVES CAN BE SUPPLIED WITH BUTTWELD ENDS.

### PARTS NAME & MATERIALS

Sr. No.	Parts	Materials
1.	BODY	ASTM A 216 GR WCB
2.	TAIL PIECE	ASTM A 216 GR WCB
3.	BALL	SS410
4.	STEM	SS410
5.	GLAND	SS410
6.	BODY SEAT	PTFE
7.	BODY SEAL	PTFE
8.	STEM PACKING	GFT
9.	GLAND PACKING	PTFE
10.	GLAND NUT	ASTM A 914 GR WCB
11.	LEVER NUT	ASTM A 914 GR WCB
12.	LEVER	CARBON STEEL
13.	STOPPER PIN	CARBON STEEL

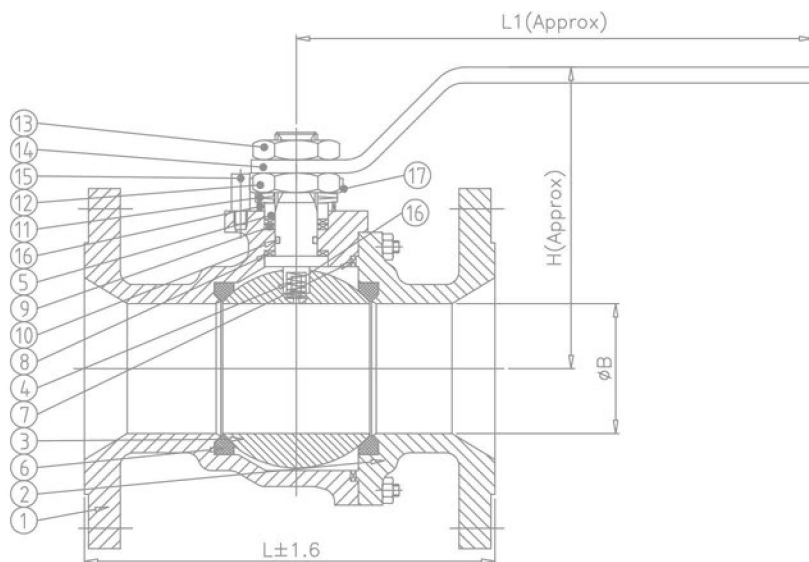


### PARTS NAME & MATERIALS

Sr. No.	Parts	Materials	Sr. No.	Parts	Materials
1.	BODY	ASTM A 216 GRWCB	10.	STEM 'O' RING	NITRILE
2.	TAILPIECE	ASTM A 216 GRWCB	11.	DISC SPRING	CARBON STEEL
3.	BALL	ASTM A 351 GR CF8M	12.	GLAND NUT	ASTM A 194 GR 2H
4.	STEM	ASTM A 276 GR 316	13.	LEVER NUT	ASTM A 194 GR 2H
5.	GLAND	ASTM A 276 GR 316	14.	LEVER	CARBON STEEL
6.	BODY SEAT	GRAFOIL	15.	STOPPER PIN	CARBON STEEL
7.	BODY SEAL	GFT	16.	ANTI STATIC DEVICE	SS
8.	STEM PACKING	GRAFOIL	17.	LOCK STRIP	SS
9.	GLAND PACKING	GRAFOIL			

### Features

1. 'NEO' VALVES CAST STEEL BALL VALVES HAVE BEEN DESIGNED TO MEET THE REQUIREMENTS OF BS5351 / EN ISO 17292-2004
2. BLOWOUT PROOF STEM DESIGN.
3. FIRE SAFE DESIGN AS PER API 607 / BS6755 PART-1
4. ANTISTATIC DEVICES ENSURE ELECTRICAL CONTINUITY BETWEEN BALL,STEM & BODY.
5. FLEXIBLE LIP SEATS FOR CAVITY RELIEF.
6. ISO MOUNTING PAD FOR EASY AUTOMATION.



### Technical Specifications

MANUFACTURING STD. : BS 5351 / EN ISO 17292-2004 FACE TO FACE, END TO END : ASME B16.10  
 END CONNECTION : FLANGED ENDS TO ASME B16.5  
 INSPECTION AND TESTING STD. : BS 6755 (PART-I) / EN ISO 12266

### Options

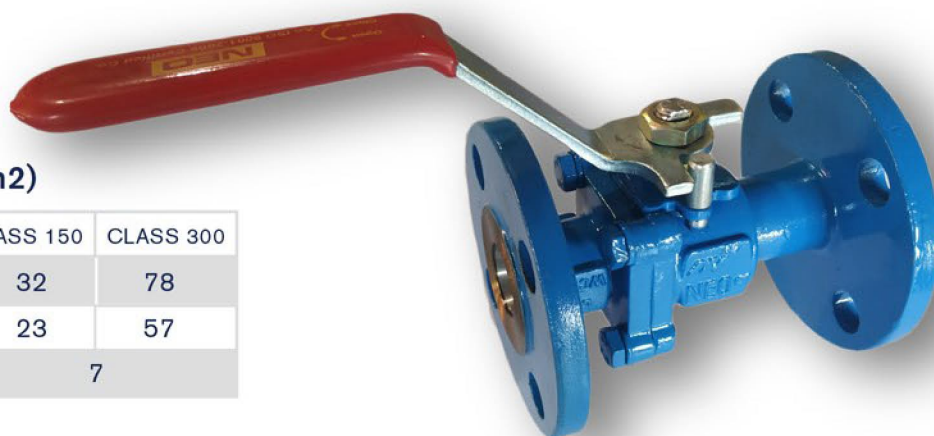
1. PNEUMATIC ACTUATOR / MANUAL GEAR OPERATOR AVAILABLE.
2. LOCKING ARRANGEMENT.
2. VALVES CAN BE SUPPLIED WITH BUTTWELD ENDS.



#150

#300

### Two Piece Reduced Port Ball Valve



#### TESTING PRESSURE( Kg/cm<sup>2</sup>)

		CLASS 150	CLASS 300
HYDRO - STATIC	SHELL	32	78
	SEAT	23	57
AIR	SEAT	7	

#### ASME 150 Class

#### Reduced Port

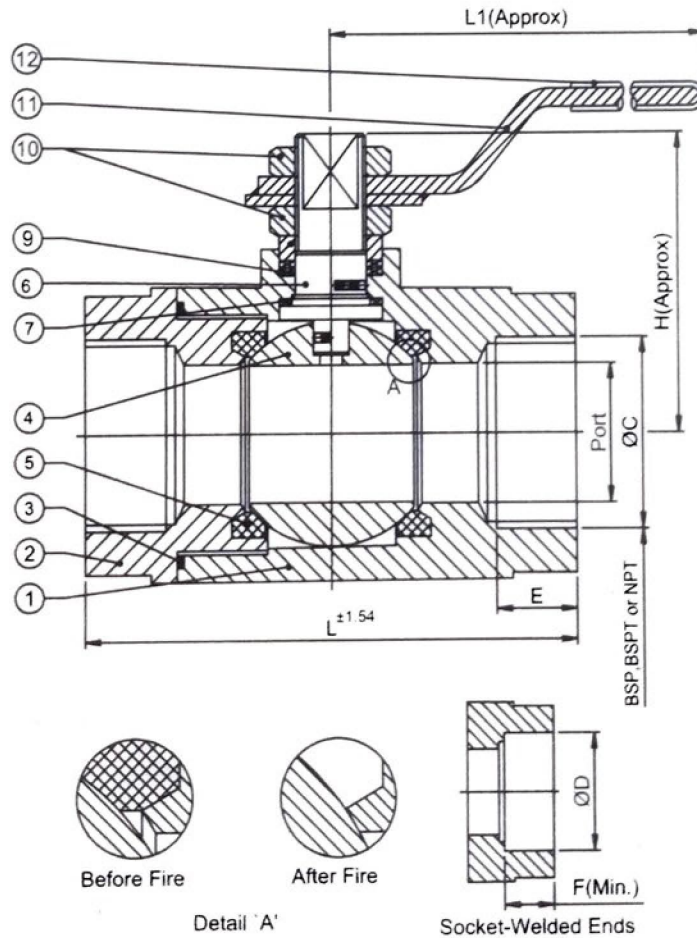
Size DN	15	20	25	40	50	65	80	100	150	200
L-RF	108	118	127	165	178	190	203	229	267	292
ØB	9	12.5	17	30	36	50	57	75	95	144
H(Approx.)	65	70	80	95	110	135	145	170	235	275
L1	150	155	160	180	200	225	325	350	500	600
WT.(Approx.)Kg	3	5	6	6	9	14	20	30	58	126

#### ASME 300 Class

#### Reduced Port

Size DN	15	20	25	40	50	65	80	100	150	200
L-RF	140	152	165	190	216	241	282	305	403	502
ØB	9	12.5	17	30	36	50	57	75	98	144
H(Approx.)	70	85	90	105	120	145	160	195	250	290
L1	156	160	180	200	225	325	350	500	600	700
WT.(Approx.)Kg	3	4	5	8	15	23	30	41	76	142





### PARTS NAME & MATERIALS

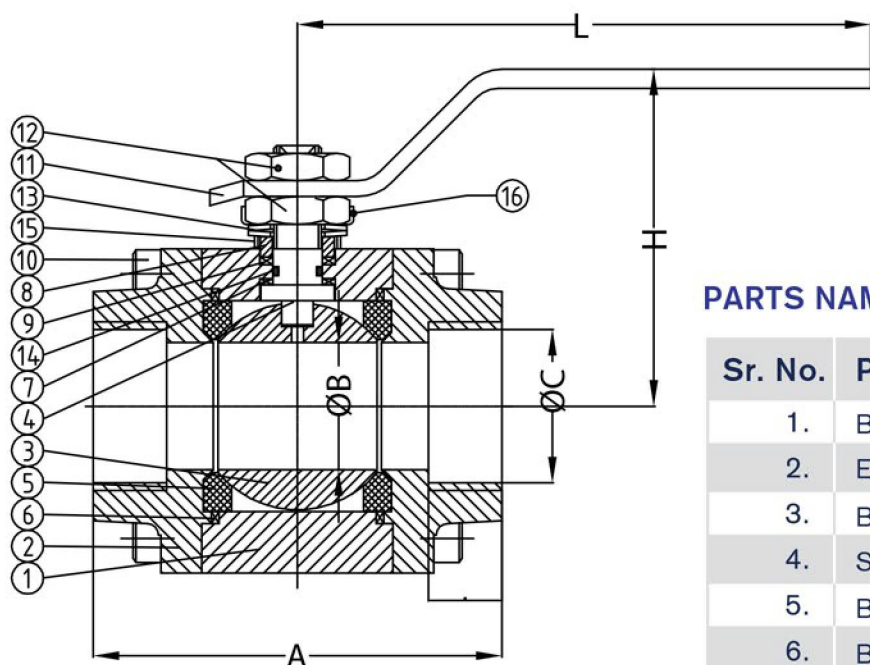
Sr. No.	Parts	Materials
1.	BODY	A 216 WCB/A 351 CF 8/CF8M/CN 7M /A 352 LCB
2.	INSERT/CONNECTOR	A 216 WCB/A 351 CF 8/CF8M/CN 7M /A 352 LCB
3.	BODY SEAL	PTFE/ GRAPHOIL / GRAPHITE
4.	BALL	A 351 CF 8/ CF8M /CN 7M
5.	BALL SEAL	PTFE/ 35% CARBON FILLED PTFE
6.	STEM	AISI 304 / AISI 316 /A 20
7.	STEM PACKING	PTFE
8.	GLAND	AISI 304 / AISI 316
9.	GLAND PACKING	PTFE/ GRAPHOIL / GRAPHITE
10.	GLAND NUT	AISI 304 / AISI 316
11.	LEVER	AISI 304 / AISI 316
12.	STEM NUT	AISI 304 / AISI 316
13.	SLEEVE	PVC



### Forged Ball Valve

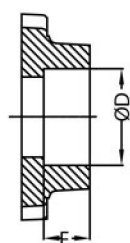
TESTING PRESSURE( Kg/cm <sup>2</sup> )			
CLASS		150	300
HYDRO	SHELL	40	104
	SEAT	22	57
MAX( WP.KG/CM <sup>2</sup> )		20	52
MAX WORKING TEMP.		425 DEG.	

SIZE	A	ØB	L	H	SCR END		SCR END	
					ØC	E	ØD	F
15	66	9	130	85	1/2*	13.56	10	98
20	71	12.5	130	100	3/4*	13.87	13	170
25	94	17	150	125	1"	17.5	13	350
40	115	32	200	140	1-1/2*	18.5	13	44
50	127	37	220	150	2"	19.2	16	5.8



#### PARTS NAME & MATERIALS

Sr. No.	Parts	Materials
1.	BODY	ASTM A 105
2.	END CONNECTOR	ASTM A 105
3.	BALL	SS 316
4.	STEM	SS 316
5.	BODY SEAT	PTFE
6.	BODY SEAL	GRAFOIL
7.	STEM PACKING	GFT
8.	GLAND	SS 316
9.	GLAND PACKING	GRAFOIL
10.	BODY STUD/NUTS	B7/2H
11.	LEVER	CARBON STEEL
12.	GLAND/LEVER NUT	CARBON STEEL
13.	SPRING DISC	SPRING STEEL
14.	STEM 'O' RING	VITON
15.	ANTI STATIC DEVICE	SS
16.	LOCK STRIP	SS



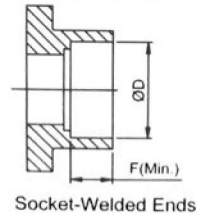
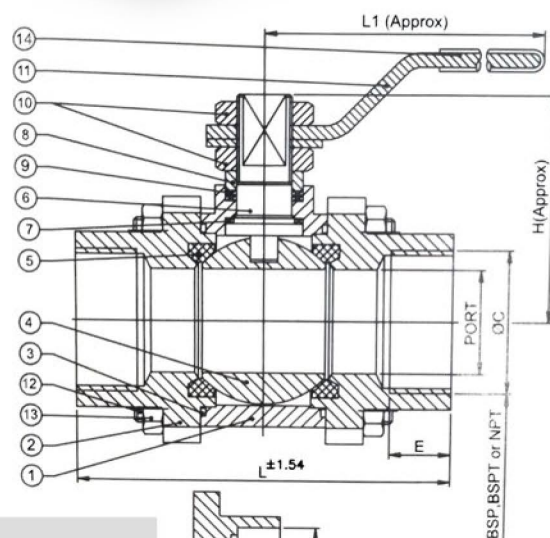
SOCKET WELD END



### THREE PIECE BALL VALVE

ISO PN 20/ ASME 150 CLASS

	15	20	25	32	40	50
PORT RB	9	12.5	17	24	30	37
PORT FB	12.5	17	24	30	37	49
A	65	75	95	110	115	125
B	44	49	64	67.5	78	87
C	21.8	27.4	34.1	42.7	49	61
E	13.5	14	17.5	18	18.5	19.5
F	10	13	13	13	13	16
H	45	48	59	65	75	80
L	122	122	149	149	181	181



Socket-Welded Ends

### PARTS NAME & MATERIALS

Sr. No.	Parts	Materials
1.	BODY	A 216 WCB/A 351 CF 8/CF8M/CN 7M /A 352 LCB
2.	INSERT/CONNECTOR	A 216 WCB/A 351 CF 8/CF8M/CN 7M /A 352 LCB
3.	BODY SEAL	PTFE/ GRAPHOIL / GRAPHITE
4.	BALL	A 351 CF 8/ CF8M /CN 7M
5.	BALL SEAL	PTFE/ 35% CARBON FILLED PTFE
6.	STEM	AISI 304 / AISI 316 /A 20
7.	STEM PACKING	PTFE
8.	GLAND	AISI 304 / AISI 316
9.	GLAND PACKING	PTFE/ GRAPHOIL / GRAPHITE
10.	GLAND NUT	AISI 304 / AISI 316
11.	LEVER	AISI 304 / AISI 316
12.	STEM NUT	AISI 304 / AISI 316
13.	BODY STUD	A 194 GR. B7/304/316
14.	BODY NUT	A 193 GR. B7/304/316
15.	SLEEVE	PVC







## **NEO VALVES** **INDUSTRIES**

AN ISO 9001:2015 CERTIFIED COMPANY  
IBR APPROVED

### NEO VALVE INDUSTRIES

#90 2<sup>nd</sup> PHASE KIADB  
TARIHAL INDUSTRIAL ESTATE  
TARIHAL,  
HUBLI - 580026  
+919845254403  
email: [neovalves@yahoo.co.in](mailto:neovalves@yahoo.co.in)  
[www.neovalves.co.in](http://www.neovalves.co.in)



### MARKETING OFFICE

SR-24, M.T.  
Sagar Industrial Estate,  
Gokul Road,  
Hubli - 580030  
+91-9845151791  
email: [neovalves@yahoo.co.in](mailto:neovalves@yahoo.co.in)

### MARKETING OFFICE

SHAAMA NANDANA COMPLEX  
1st Floor,  
Kulai Hosabettu,  
MANGALORE - 575019  
+91-9845254403  
email: [neovalves@yahoo.co.in](mailto:neovalves@yahoo.co.in)



### OVERSEAS MARKETING OFFICE

Honesty & perfection  
Cleaning services  
305, SMJ2 building,  
Near Dominos Pizza,  
Damascus street, AL qusais,  
Dubai(UAE)  
email: [neovalves@yahoo.co.in](mailto:neovalves@yahoo.co.in)

MANUAL VALVES VALVES AUTOMATION  
CONTROL VALVES CUSTOMIZED VALVES

